

actin Ab

[Images\(1\)](#)

Cat.#: T0021	Concn.: ~1mg/ml	Mol.Wt.: 43KD
Size:	Source: Mouse	Clonality: Monoclonal

Application: WB 1:3000-1:10000, IHC 1:50-1:200, IF/ICC: 1:200
*The optimal dilutions should be determined by the end user.

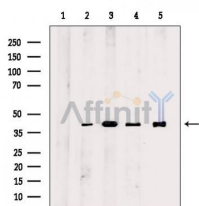
Reactivity: Human,Mouse,Rat,Pig,Zebrafish,Bovine,Sheep,Rabbit,Goat,Guinea pig,Dog,Monkey,Hamster,Chicken,Fish

Storage: Mouse IgG1 in phosphate buffered saline (without Mg²⁺ and Ca²⁺), pH 7.4, 150mM NaCl, 0.02% sodium azide and 50% glycerol. Store at -20 °C. Stable for 12 months from date of receipt.

Purification: Affinity-chromatography.

Immunogen: Full-length Actin protein of human.

Uniprot: P60709



Western blot analysis of various lysates, using actin Mouse Monoclonal Ab.
Lane1:C6 cells treated with blocking peptide,
Lane2:C6 cell lysates,
Lane3:Hela cell lysates,
Lane4:K562 cell lysates,
Lane5:Mouse brain tissue lysates.

IMPORTANT: For western blot, incubate membrane with diluted primary Ab in 5% w/v milk, 1X TBS, 0.1% Tween@20 at 4°C with gentle shaking, overnight.

For Research Use Only. Not for use in diagnostic and therapeutic procedures. Not for resale without express authorization.