

STAT1 Ab

[Images\(1\)](#)

Cat.#: AF6299	Concn.: ~1mg/ml	Mol.Wt.: 84kDa
Size:	Source: Rabbit	Clonality: Polyclonal

Application: WB 1:500-1:2000
 *The optimal dilutions should be determined by the end user.

Reactivity: Human,Mouse,Monkey

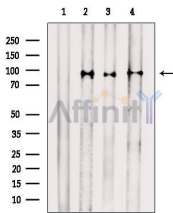
Storage: Rabbit IgG in phosphate buffered saline , pH 7.4, 150mM NaCl, 0.02% sodium azide and 50% glycerol. Store at -20 °C. Stable for 12 months from date of receipt.

Purification: The antiserum was purified by peptide affinity chromatography using SulfoLink™ Coupling Resin (Thermo Fisher Scientific).

Immunogen: A synthesized peptide derived from human STAT1

Uniprot: P42224

Description: The protein encoded by this gene is a member of the STAT protein family. In response to cytokines and growth factors, STAT family members are phosphorylated by the receptor associated kinases, and then form homo- or heterodimers that translocate to the cell nucleus where they act as transcription activators.



Western blot analysis of extracts from various samples, using STAT1 Ab.
 Lane 1: Hela cells treated with blocking peptide;
 Lane 2: Hela cells;
 Lane 3: B16f10 cells;
 Lane 4: VERO cellst.

IMPORTANT: For western blot, incubate membrane with diluted primary Ab in 5% w/v milk , 1X TBS, 0.1% Tween@20 at 4°C with gentle shaking, overnight.

For Research Use Only. Not for use in diagnostic and therapeutic procedures. Not for resale without express authorization.