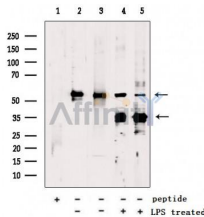


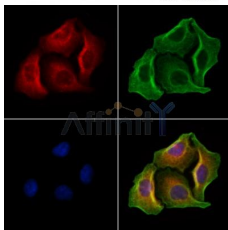
## GSDMD Ab

[References\(75\)](#) [Images\(27\)](#)

Cat.#: AF4012	Concn.: ~1mg/ml	Mol.Wt.: 53 kDa(full), 35kDa(cleaved)
Size:	Source: Rabbit	Clonality: Polyclonal
Application:	WB 1:500-1:2000, IHC 1:50-1:200, IF/ICC 1:50-1:200 *The optimal dilutions should be determined by the end user.	
Reactivity:	Human,Mouse,Rat	
Storage:	Rabbit IgG in phosphate buffered saline , pH 7.4, 150mM NaCl, 0.02% sodium azide and 50% glycerol. Store at -20 °C. Stable for 12 months from date of receipt.	
Purification:	The antiserum was purified by peptide affinity chromatography using SulfoLink™ Coupling Resin (Thermo Fisher Scientific).	
Immunogen:	A synthesized peptide derived from human GSDMD.	
Uniprot:	P57764	



Western blot analysis of extracts from various samples, using GSDMD Ab.  
Lane 1: C6(TPA + LPS treatment?) lysates treated with blocking peptide;  
Lane 2: C6(TPA treatment?) lysates;  
Lane 3: HepG2(TPA treatment?) lysates;  
Lane 4: C6(TPA and LPS treatment?) lysates;  
Lane 5: HepG2(TPA and LPS treatment?) lysates;



AF4012 staining HeLa(LPS treated 4h) by IF/ICC. The samples were fixed with PFA and permeabilized in 0.1% Triton X-100, then blocked in 10% serum for 45 minutes at 25°C. Samples were then incubated with primary Ab(AF4012 1:200) and mouse anti-beta tubulin Ab(T0023 1:200) for 1 hour at 37°C. An AlexaFluor594 conjugated goat anti-rabbit IgG(H+L) Ab(Red) and an AlexaFluor488 conjugated goat anti-mouse IgG(H+L) Ab(Green) were used as the secondary Ab.  
The nuclear counter stain is DAPI(blue).

**IMPORTANT:** For western blot, incubate membrane with diluted primary Ab in 5% w/v milk , 1X TBS, 0.1% Tween@20 at 4°C with gentle shaking, overnight.

For Research Use Only. Not for use in diagnostic and therapeutic procedures. Not for resale without express authorization.