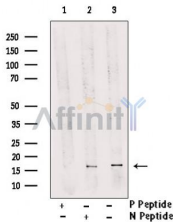


Phospho-FUNDC1 (Ser17) Ab

[References\(3\)](#) [Images\(4\)](#)

Cat.#: AF0001	Concn.: ~1mg/ml	Mol.Wt.: 17KD
Size:	Source: Rabbit	Clonality: Polyclonal

Application:	WB 1:500-1:2000 *The optimal dilutions should be determined by the end user.
Reactivity:	Human
Storage:	Rabbit IgG in phosphate buffered saline , pH 7.4, 150mM NaCl, 0.02% sodium azide and 50% glycerol. Store at -20 °C. Stable for 12 months from date of receipt.
Purification:	The Ab is from purified rabbit serum by affinity purification via sequential chromatography on phospho-peptide and non-phospho-peptide affinity columns.
Immunogen:	A synthesized peptide derived from human FUNDC1 around the phosphorylation site of Serine 17.
Uniprot:	Q8IVP5



Western blot analysis on Human breast carcinoma lysates using Phospho-FUNDC1 (Ser17) Ab.

IMPORTANT: For western blot, incubate membrane with diluted primary Ab in 5% w/v milk , 1X TBS, 0.1% Tween@20 at 4°C with gentle shaking, overnight.

For Research Use Only. Not for use in diagnostic and therapeutic procedures. Not for resale without express authorization.