

Claudin 17 Ab

[Images\(2\)](#)

Cat.#: DF13751
Size:

Concn.: ~1mg/ml
Source: Rabbit

Mol.Wt.: 24kDa
Clonality: Polyclonal

Application:

WB 1:500-1:2000

*The optimal dilutions should be determined by the end user.

Reactivity:

Human,Mouse

Storage:

Rabbit IgG in phosphate buffered saline , pH 7.4, 150mM NaCl, 0.02% sodium azide and 50% glycerol. Store at -20 °C. Stable for 12 months from date of receipt.

Purification:

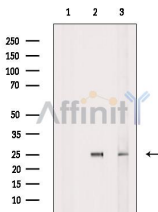
The antiserum was purified by peptide affinity chromatography using SulfoLink™ Coupling Resin (Thermo Fisher Scientific).

Immunogen:

A synthesized peptide derived from human Claudin 17, corresponding to a region within C-terminal amino acids.

Uniprot:

P56750



Western blot analysis of extracts from various samples, using Claudin 17 Ab.

Lane 1: MCF7, treated with blocking peptide;

Lane 2: MCF7;

Lane 3: Mouse testis.

IMPORTANT: For western blot, incubate membrane with diluted primary Ab in 5% w/v milk , 1X TBS, 0.1% Tween@20 at 4°C with gentle shaking, overnight.

For Research Use Only. Not for use in diagnostic and therapeutic procedures. Not for resale without express authorization.