

ROCK2 Ab

[Images\(2\)](#)

Cat.#: AF6028 Concn.: ~1mg/ml Mol.Wt.: 165kDa
Size: Source: Rabbit Clonality: Polyclonal

Application: WB 1:500-1:2000
*The optimal dilutions should be determined by the end user.

Reactivity: Human,Mouse,Rat,Monkey

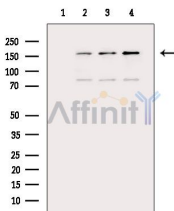
Storage: Rabbit IgG in phosphate buffered saline , pH 7.4, 150mM NaCl, 0.02% sodium azide and 50% glycerol. Store at -20 °C. Stable for 12 months from date of receipt.

Purification: The antiserum was purified by peptide affinity chromatography using SulfoLink™ Coupling Resin (Thermo Fisher Scientific).

Immunogen: A synthesized peptide derived from human ROCK2, corresponding to a region within the internal amino acids.

Uniprot: O75116

Description: The protein encoded by this gene is a serine/threonine kinase that regulates cytokinesis, smooth muscle contraction, the formation of actin stress fibers and focal adhesions, and the activation of the c-fos serum response element. This protein, which is an isozyme of ROCK1 is a target for the small GTPase Rho. [provided by RefSeq]



Western blot analysis of extracts from various samples, using ROCK2 Ab.
Lane 1: Mouse kidney, blocked with antigen-specific peptides.
Lane 2: Mouse kidney.
Lane 3: Hepg2 cells(serum starvation treatment).
Lane 4: Hela cells(heat-shock treatment).

IMPORTANT: For western blot, incubate membrane with diluted primary Ab in 5% w/v milk , 1X TBS, 0.1% Tween@20 at 4°C with gentle shaking, overnight.

For Research Use Only. Not for use in diagnostic and therapeutic procedures. Not for resale without express authorization.