

KDM5C / Jarid1C / SMCX Ab

[Images\(6\)](#)

Cat.#: DF13631
Size:

Concn.: ~1mg/ml
Source: Rabbit

Mol.Wt.: 175kDa
Clonality: Polyclonal

Application:

WB 1:500-1:2000, IHC 1:50-1:200
*The optimal dilutions should be determined by the end user.

Reactivity:

Human,Mouse,Rat

Storage:

Rabbit IgG in phosphate buffered saline , pH 7.4, 150mM NaCl, 0.02% sodium azide and 50% glycerol. Store at -20 °C. Stable for 12 months from date of receipt.

Purification:

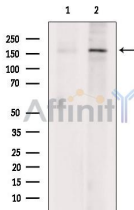
The antiserum was purified by peptide affinity chromatography using SulfoLink™ Coupling Resin (Thermo Fisher Scientific).

Immunogen:

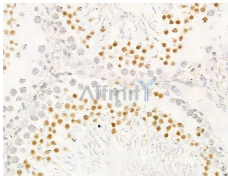
A synthesized peptide derived from human KDM5C / Jarid1C / SMCX, corresponding to a region within C-terminal amino acids.

Uniprot:

P41229



Western blot analysis of extracts from DU145 cells, using KDM5C / Jarid1C / SMCX Ab. The lane on the left was treated with blocking peptide.



DF13631 at 1/100 staining Rat testis tissue by IHC-P. The sample was formaldehyde fixed and a heat mediated antigen retrieval step in citrate buffer was performed. The sample was then blocked and incubated with the primary Ab at 4°C overnight. An HRP conjugated anti-Rabbit Ab was used as the secondary Ab.

IMPORTANT: For western blot, incubate membrane with diluted primary Ab in 5% w/v milk , 1X TBS, 0.1% Tween@20 at 4°C with gentle shaking, overnight.

For Research Use Only. Not for use in diagnostic and therapeutic procedures. Not for resale without express authorization.