

## TAK1 Ab

[Images\(2\)](#)

Cat.#: AF6019  
Size:

Concn.: ~1mg/ml  
Source: Rabbit

Mol.Wt.: 70kDa  
Clonality: Polyclonal

Application:

WB 1:500-1:2000, IHC 1:50-1:200, IF/ICC 1:100-1:500  
\*The optimal dilutions should be determined by the end user.

Reactivity:

Human,Mouse,Rat

Storage:

Rabbit IgG in phosphate buffered saline , pH 7.4, 150mM NaCl, 0.02% sodium azide and 50% glycerol. Store at -20 °C. Stable for 12 months from date of receipt.

Purification:

The antiserum was purified by peptide affinity chromatography using SulfoLink™ Coupling Resin (Thermo Fisher Scientific).

Immunogen:

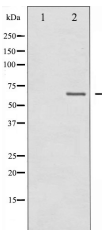
A synthesized peptide derived from human TAK1, corresponding to a region within the internal amino acids.

Uniprot:

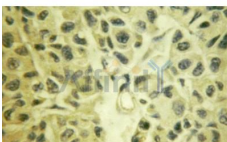
O43318

Description:

AK1 a protein kinase of the MLK family. Mediates signal transduction induced by TGF beta and morphogenetic protein (BMP), and controls a variety of cell functions including transcription regulation and apoptosis. In response to IL-1, forms a kinase complex including TRAF6, MAP3K7P1/TAB1 and MAP3K7P2/TAB2; this complex is required for the activation of nuclear factor kappa B.



Western blot analysis of MAP3K7 expression in Jurkat whole cell lysates,The lane on the left was treated with the antigen-specific peptide.



AF6019 at 1/100 staining human liver tissue by IHC-P. The sample was formaldehyde fixed and a heat mediated antigen retrieval step in citrate buffer was performed. The sample was then blocked and incubated with the Ab for 1.5 hours at 22°C. An HRP conjugated goat anti-rabbit Ab was used as the secondary Ab.

**IMPORTANT:** For western blot, incubate membrane with diluted primary Ab

in 5% w/v milk , 1X TBS, 0.1% Tween@20 at 4°C with gentle shaking,  
overnight.

For Research Use Only. Not for use in diagnostic and therapeutic  
procedures. Not for resale without express authorization.