

## HBZ Ab

[Images\(3\)](#)

Cat.#: DF13400  
Size:

Concn.: ~1mg/ml  
Source: Rabbit

Mol.Wt.: 15kDa  
Clonality: Polyclonal

Application:

IHC 1:50-1:200, WB 1:500-1:2000

\*The optimal dilutions should be determined by the end user.

Reactivity:

Human

Storage:

Rabbit IgG in phosphate buffered saline , pH 7.4, 150mM NaCl, 0.02% sodium azide and 50% glycerol. Store at -20 °C. Stable for 12 months from date of receipt.

Purification:

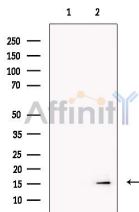
The antiserum was purified by peptide affinity chromatography using SulfoLink™ Coupling Resin (Thermo Fisher Scientific).

Immunogen:

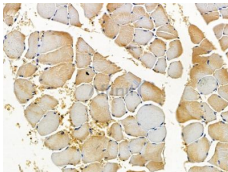
A synthesized peptide derived from human HBZ, corresponding to a region within the internal amino acids.

Uniprot:

P02008



Western blot analysis of extracts from K562, using HBZ Ab. The lane on the left was treated with blocking peptide.



DF13400 at 1/100 staining rat muscle tissue by IHC-P. The sample was formaldehyde fixed and a heat mediated antigen retrieval step in citrate buffer was performed. The sample was then blocked and incubated with the primary Ab at 4°C overnight. An HRP conjugated anti-rabbit Ab was used as the secondary Ab.

**IMPORTANT:** For western blot, incubate membrane with diluted primary Ab in 5% w/v milk , 1X TBS, 0.1% Tween@20 at 4°C with gentle shaking, overnight.

For Research Use Only. Not for use in diagnostic and therapeutic procedures. Not for resale without express authorization.