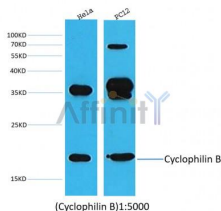


Cyclophilin B Ab

[Images\(1\)](#)

Cat.#: BF0717	Concn.: ~1mg/ml	Mol.Wt.: 24kDa
Size:	Source: Mouse	Clonality: Monoclonal

Application:	WB(1:1000-1:10000), IHC(1:100-1:1000) *The optimal dilutions should be determined by the end user.
Reactivity:	Human, Mouse, Rat
Storage:	Mouse IgG1 in phosphate buffered saline (without Mg ²⁺ and Ca ²⁺), pH 7.4, 150mM NaCl, 0.02% sodium azide and 50% glycerol. Store at -20 °C. Stable for 12 months from date of receipt.
Purification:	Affinity-chromatography.
Immunogen:	Purified recombinant fragment of human Cyclophilin B expressed in E. Coli.
Uniprot:	P23284



Western blot analysis of extracts from various samples, using Cyclophilin B mouse monoclonal Ab.

lane 1: Hela,
lane 2: PC12

IMPORTANT: For western blot, incubate membrane with diluted primary Ab in 5% w/v milk, 1X TBS, 0.1% Tween@20 at 4°C with gentle shaking, overnight.

For Research Use Only. Not for use in diagnostic and therapeutic procedures. Not for resale without express authorization.