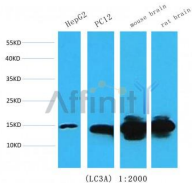


LC3A Ab

[Images\(1\)](#)

Cat.#: BF0707	Concn.: ~1mg/ml	Mol.Wt.: 14kDa,16kDa
Size:	Source: Mouse	Clonality: Monoclonal
Application:	WB(1:500-1:2000), IHC(1:200-1:1000) *The optimal dilutions should be determined by the end user.	
Reactivity:	Human,Mouse,Rat	
Storage:	Mouse IgG1 in phosphate buffered saline (without Mg2+ and Ca2+), pH 7.4, 150mM NaCl, 0.02% sodium azide and 50% glycerol. Store at -20 °C. Stable for 12 months from date of receipt.	
Purification:	Affinity-chromatography.	
Immunogen:	Purified recombinant fragment of human LC3A expressed in E. Coli.	
Uniprot:	Q9H492	



Western blot analysis of extracts from various samples, using LC3A mouse monoclonal Ab.
 lane1:HepG2,
 lane2:PC12,
 lane3:mouse brain,
 lane4:rat brain.

IMPORTANT: For western blot, incubate membrane with diluted primary Ab in 5% w/v milk , 1X TBS, 0.1% Tween@20 at 4°C with gentle shaking, overnight.

For Research Use Only. Not for use in diagnostic and therapeutic procedures. Not for resale without express authorization.