

EGFR Ab

[Images\(1\)](#)

Cat.#: AF6047 Concn.: ~1mg/ml Mol.Wt.: 135kDa
Size: Source: Rabbit Clonality: Polyclonal

Application: WB 1:500-1:2000
 *The optimal dilutions should be determined by the end user.

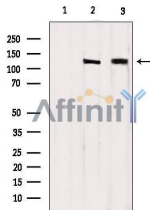
Reactivity: Human,Mouse,Rat,Monkey

Storage: Rabbit IgG in phosphate buffered saline , pH 7.4, 150mM NaCl, 0.02% sodium azide and 50% glycerol. Store at -20 °C. Stable for 12 months from date of receipt.

Purification: The antiserum was purified by peptide affinity chromatography using SulfoLink™ Coupling Resin (Thermo Fisher Scientific).

Immunogen: A synthesized peptide derived from human EGFR, corresponding to a region within C-terminal amino acids.

Uniprot: P00533



Western blot analysis of extracts from various samples, using EGFR Ab.
Lane 1: VERO treated with blocking peptide; Lane 2: VERO; Lane 3: HepG2.

IMPORTANT: For western blot, incubate membrane with diluted primary Ab in 5% w/v milk , 1X TBS, 0.1% Tween@20 at 4°C with gentle shaking, overnight.

For Research Use Only. Not for use in diagnostic and therapeutic procedures. Not for resale without express authorization.