

Phospho-Estrogen Receptor-beta (Ser105) Ab

[Images\(3\)](#)

Cat.#: AF3469 Concn.: ~1mg/ml Mol.Wt.: 59kDa
Size: Source: Rabbit Clonality: Polyclonal

Application: WB 1:500-1:2000, IF/ICC 1:100-1:500
*The optimal dilutions should be determined by the end user.

Reactivity: Human, Mouse, Rat

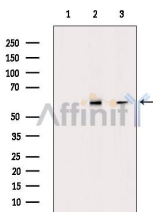
Storage: Rabbit IgG in phosphate buffered saline, pH 7.4, 150mM NaCl, 0.02% sodium azide and 50% glycerol. Store at -20 °C. Stable for 12 months from date of receipt.

Purification: The Ab is from purified rabbit serum by affinity purification via sequential chromatography on phospho-peptide and non-phospho-peptide affinity columns.

Immunogen: A synthesized peptide derived from human Estrogen Receptor- beta around the phosphorylation site of Ser105.

Uniprot: Q92731

Description: Estrogen receptor-beta (ESR2) is a member of the superfamily of nuclear receptors, which can transduce extracellular signals into transcriptional responses.

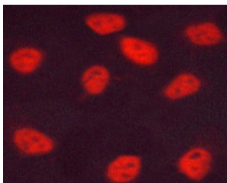


Western blot analysis of extracts from various samples, using Phospho-Estrogen Receptor beta (Ser105) Ab.

Lane 1: Heat-shock treated A2780 cells, blocked with antigen-specific peptides,

Lane 2: Heat-shock treated A2780 cells,

Lane 3: Heat-shock treated RAW264.7 cells.



AF3469 staining HUVEC cells by ICC/IF. Cells were fixed with PFA and permeabilized in 0.1% saponin prior to blocking in 10% serum for 45 minutes at 37°C. The primary Ab was diluted 1/400 and incubated with the sample for 1 hour at 37°C. A Alexa Fluor 594 conjugated goat polyclonal to rabbit IgG (H+L), diluted 1/600 was used as secondary Ab.

IMPORTANT: For western blot, incubate membrane with diluted primary Ab in 5% w/v milk, 1X TBS, 0.1% Tween@20 at 4°C with gentle shaking, overnight.



Affinity Biosciences

website: www.affbiotech.com

order: order@affbiotech.com

For Research Use Only. Not for use in diagnostic and therapeutic procedures. Not for resale without express authorization.