

## GNPNAT1 Ab

[Images\(2\)](#)

Cat.#: DF13048  
Size:

Concn.: ~1mg/ml  
Source: Rabbit

Mol.Wt.: 23 kDa  
Clonality: Polyclonal

Application:

WB 1:500-1:2000

\*The optimal dilutions should be determined by the end user.

Reactivity:

Human,Mouse,Rat

Storage:

Rabbit IgG in phosphate buffered saline , pH 7.4, 150mM NaCl, 0.02% sodium azide and 50% glycerol. Store at -20 °C. Stable for 12 months from date of receipt.

Purification:

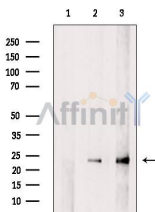
The antiserum was purified by peptide affinity chromatography using SulfoLink™ Coupling Resin (Thermo Fisher Scientific).

Immunogen:

A synthesized peptide derived from human GNPNAT1, corresponding to a region within N-terminal amino acids.

Uniprot:

Q96EK6



Western blot analysis of extracts from various samples, using GNPNAT1 Ab.  
Lane 1: HepG2 cells, blocked with antigen-specific peptides,  
Lane 2: HepG2 cells,  
Lane 3: Rat liver.

**IMPORTANT:** For western blot, incubate membrane with diluted primary Ab in 5% w/v milk , 1X TBS, 0.1% Tween@20 at 4°C with gentle shaking, overnight.

For Research Use Only. Not for use in diagnostic and therapeutic procedures. Not for resale without express authorization.