

## Phospho-PKD1/PKC mu (Tyr463) Ab

[Images\(3\)](#)

Cat.#: AF3443	Concn.: ~1mg/ml	Mol.Wt.: 130kDa
Size:	Source: Rabbit	Clonality: Polyclonal

**Application:** WB 1:500-1:2000, IHC 1:50-1:200, IF/ICC 1:100-1:500  
 \*The optimal dilutions should be determined by the end user.

**Reactivity:** Human,Mouse,Rat

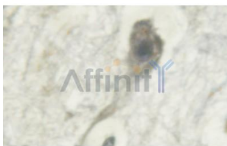
**Storage:** Rabbit IgG in phosphate buffered saline , pH 7.4, 150mM NaCl, 0.02% sodium azide and 50% glycerol. Store at -20 °C. Stable for 12 months from date of receipt.

**Purification:** The Ab is from purified rabbit serum by affinity purification via sequential chromatography on phospho-peptide and non-phospho-peptide affinity columns.

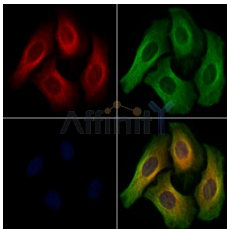
**Immunogen:** A synthesized peptide derived from human PKD1/PKC mu around the phosphorylation site of Tyr463.

**Uniprot:** Q15139

**Description:** Members of the protein kinase C (PKC) family function in many extracellular receptor-mediated signal transduction pathways. See PRKCA (MIM 176960) for further background information.



AF3443 at 1/100 staining CRC tissue by IHC-P. The sample was formaldehyde fixed and a heat mediated antigen retrieval step in citrate buffer was performed. The sample was then blocked and incubated with the Ab for 1.5 hours at 22°C. An HRP conjugated goat anti-rabbit Ab was used as the secondary Ab.



AF3443 staining HeLa cells(4h of LPS treatment) by IF/ICC. The samples were fixed with PFA and permeabilized in 0.1% Triton X-100,then blocked in 10% serum for 45 minutes at 25°C. Samples were then incubated with primary Ab(AF3443 1:200) and mouse anti-beta tubulin Ab(T0023 1:200) for 1 hour at 37°C. An AlexaFluor594 conjugated goat anti-rabbit IgG(H+L) Ab(Red) and an AlexaFluor488 conjugated goat anti-mouse IgG(H+L) Ab(Green) were used as the secondary Ab.  
 The nuclear counter stain is DAPI(blue).

**IMPORTANT:** For western blot, incubate membrane with diluted primary Ab in 5% w/v milk , 1X TBS, 0.1% Tween@20 at 4°C with gentle shaking, overnight.



**Affinity Biosciences**

website: [www.affbiotech.com](http://www.affbiotech.com)

order: [order@affbiotech.com](mailto:order@affbiotech.com)

---

For Research Use Only. Not for use in diagnostic and therapeutic procedures. Not for resale without express authorization.