

## CSRFP2 Ab

[Images\(2\)](#)

Cat.#: DF12921                      Concn.: ~1mg/ml                      Mol.Wt.: 21 kDa  
Size:                                      Source: Rabbit                          Clonality: Polyclonal

Application:                      WB 1:500-1:2000  
  \*The optimal dilutions should be determined by the end user.

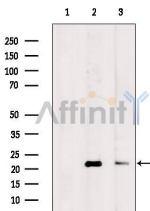
Reactivity:                        Human,Mouse,Rat

Storage:                            Rabbit IgG in phosphate buffered saline , pH 7.4, 150mM NaCl, 0.02% sodium azide and 50% glycerol. Store at -20 °C. Stable for 12 months from date of receipt.

Purification:                      The antiserum was purified by peptide affinity chromatography using SulfoLink™ Coupling Resin (Thermo Fisher Scientific).

Immunogen:                        A synthesized peptide derived from human CSRFP2, corresponding to a region within the internal amino acids.

Uniprot:                             Q16527



Western blot analysis of extracts from various samples, using CSRFP2 Ab.  
Lane 1: Mouse heart, treated with blocking peptide;  
Lane 2: Mouse heart;  
Lane 3: Hela cells.

**IMPORTANT:** For western blot, incubate membrane with diluted primary Ab in 5% w/v milk , 1X TBS, 0.1% Tween@20 at 4°C with gentle shaking, overnight.

For Research Use Only. Not for use in diagnostic and therapeutic procedures. Not for resale without express authorization.