

## CRISP3 Ab

[Images\(3\)](#)

Cat.#: DF12915                      Concn.: ~1mg/ml                      Mol.Wt.: 29 kDa, 38 kDa  
Size:                                      Source: Rabbit                          Clonality: Polyclonal

Application:                          WB 1:500-1:2000, IF/ICC 1:100-1:500  
\*The optimal dilutions should be determined by the end user.

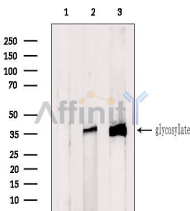
Reactivity:                            Human,Mouse,Monkey

Storage:                                Rabbit IgG in phosphate buffered saline , pH 7.4, 150mM NaCl, 0.02% sodium azide and 50% glycerol. Store at -20 °C. Stable for 12 months from date of receipt.

Purification:                         The antiserum was purified by peptide affinity chromatography using SulfoLink™ Coupling Resin (Thermo Fisher Scientific).

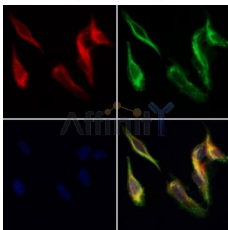
Immunogen:                         A synthesized peptide derived from human CRISP3, corresponding to a region within the internal amino acids.

Uniprot:                                P54108



Western blot analysis of extracts from various samples, using CRISP3 Ab.  
Lane 1: COS7, treated with blocking peptide;  
Lane 2: COS7;  
Lane 3: Colo205.

Observed bands: 38 kDa.



DF12915 staining HeLa cells by IF/ICC. The samples were fixed with PFA and permeabilized in 0.1% Triton X-100, then blocked in 10% serum for 45 minutes at 25°C. Samples were then incubated with primary Ab(DF12915 1:200) and mouse anti-beta tubulin Ab(T0023 1:200) for 1 hour at 37°C. An AlexaFluor594 conjugated goat anti-rabbit IgG(H+L) Ab(Red) and an AlexaFluor488 conjugated goat anti-mouse IgG(H+L) Ab(Green) were used as the secondary Ab.

The nuclear counter stain is DAPI(blue).

**IMPORTANT:** For western blot, incubate membrane with diluted primary Ab in 5% w/v milk , 1X TBS, 0.1% Tween@20 at 4°C with gentle shaking, overnight.

For Research Use Only. Not for use in diagnostic and therapeutic procedures. Not for resale without express authorization.