

## Phospho-GAB1 (Tyr627) Ab

[Images\(2\)](#)

Cat.#: AF3429                      Concn.: ~1mg/ml                      Mol.Wt.: 110kDa  
Size:                                      Source: Rabbit                              Clonality: Polyclonal

Application:                      WB 1:500-1:2000, IF/ICC 1:100-1:500  
\*The optimal dilutions should be determined by the end user.

Reactivity:                      Human,Mouse

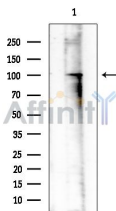
Storage:                              Rabbit IgG in phosphate buffered saline , pH 7.4, 150mM NaCl, 0.02% sodium azide and 50% glycerol. Store at -20 °C. Stable for 12 months from date of receipt.

Purification:                      The Ab is from purified rabbit serum by affinity purification via sequential chromatography on phospho-peptide and non-phospho-peptide affinity columns.

Immunogen:                      A synthesized peptide derived from human GAB1 around the phosphorylation site of Tyr627.

Uniprot:                              Q13480

Description:                      Grb2-associated binding protein 1 is a member of the IRS-1-like multisubstrate docking protein family. Contains an N-terminal pleckstrin homology (PH) domain and several proline-rich SH3 domain-binding sequences.



Western blot analysis of extracts from COLO205 cells(heat-shock treatment), using Phospho-GAB1 (Tyr627) Ab at 1/1000 dilution.  
Observed bands:100kD.

**IMPORTANT:** For western blot, incubate membrane with diluted primary Ab in 5% w/v milk , 1X TBS, 0.1% Tween@20 at 4°C with gentle shaking, overnight.

For Research Use Only. Not for use in diagnostic and therapeutic procedures. Not for resale without express authorization.