

# AADAT Ab

[Images\(3\)](#)

Cat.#: DF12804	Concn.: ~1mg/ml	Mol.Wt.: 48 kDa
Size:	Source: Rabbit	Clonality: Polyclonal

**Application:** IHC 1:50-1:200, WB 1:500-1:2000  
 \*The optimal dilutions should be determined by the end user.

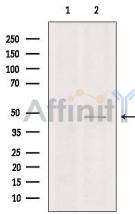
**Reactivity:** Human,Mouse,Rat

**Storage:** Rabbit IgG in phosphate buffered saline , pH 7.4, 150mM NaCl, 0.02% sodium azide and 50% glycerol. Store at -20 °C. Stable for 12 months from date of receipt.

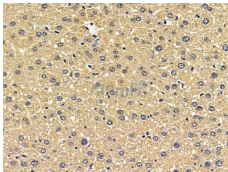
**Purification:** The antiserum was purified by peptide affinity chromatography using SulfoLink™ Coupling Resin (Thermo Fisher Scientific).

**Immunogen:** A synthesized peptide derived from human AADAT, corresponding to a region within the internal amino acids.

**Uniprot:** Q8N5Z0



Western blot analysis of extracts from Pc12, using AADAT Ab. The lane on the left was treated with blocking peptide.



DF12804 at 1/100 staining mouse liver tissue by IHC-P. The sample was formaldehyde fixed and a heat mediated antigen retrieval step in citrate buffer was performed. The sample was then blocked and incubated with the primary Ab at 4°C overnight. An HRP conjugated anti-rabbit Ab was used as the secondary Ab.

**IMPORTANT:** For western blot, incubate membrane with diluted primary Ab in 5% w/v milk , 1X TBS, 0.1% Tween@20 at 4°C with gentle shaking, overnight.

For Research Use Only. Not for use in diagnostic and therapeutic procedures. Not for resale without express authorization.