

## XAB2 Ab

[Images\(3\)](#)

Cat.#: DF12798                      Concn.: ~1mg/ml                      Mol.Wt.: 100 kDa  
 Size:                                      Source: Rabbit                          Clonality: Polyclonal

Application:                              WB 1:500-1:2000, IF/ICC 1:100-1:500  
 \*The optimal dilutions should be determined by the end user.

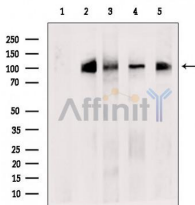
Reactivity:                                Human,Mouse,Monkey

Storage:                                    Rabbit IgG in phosphate buffered saline , pH 7.4, 150mM NaCl, 0.02% sodium azide and 50% glycerol. Store at -20 °C. Stable for 12 months from date of receipt.

Purification:                              The antiserum was purified by peptide affinity chromatography using SulfoLink™ Coupling Resin (Thermo Fisher Scientific).

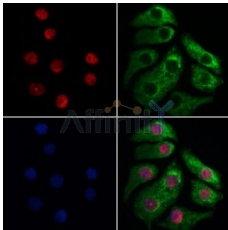
Immunogen:                                A synthesized peptide derived from human XAB2, corresponding to a region within the internal amino acids.

Uniprot:                                      Q9HCS7



Western blot analysis of extracts from various samples, using XAB2 Ab.

Lane 1: 3T3, treated with blocking peptide;  
 Lane 2: 3T3;  
 Lane 3: Mouse spleen;  
 Lane 4: COS7;  
 Lane 5: Colo205.



DF12798 staining Hela cells by IF/ICC. The samples were fixed with PFA and permeabilized in 0.1% Triton X-100, then blocked in 10% serum for 45 minutes at 25°C. Samples were then incubated with primary Ab(DF12798 1:200) and mouse anti-beta tubulin Ab(T0023 1:200) for 1 hour at 37°C. An AlexaFluor594 conjugated goat anti-rabbit IgG(H+L) Ab(Red) and an AlexaFluor488 conjugated goat anti-mouse IgG(H+L) Ab(Green) were used as the secondary Ab.

The nuclear counter stain is DAPI(blue).

**IMPORTANT:** For western blot, incubate membrane with diluted primary Ab in 5% w/v milk , 1X TBS, 0.1% Tween@20 at 4°C with gentle shaking, overnight.

For Research Use Only. Not for use in diagnostic and therapeutic procedures. Not for resale without express authorization.