

## PIH1D1 Ab

[Images\(1\)](#)

Cat.#: DF12697                      Concn.: ~1mg/ml                      Mol.Wt.: 39 kDa  
Size:                                      Source: Rabbit                          Clonality: Polyclonal

Application:                          WB 1:500-1:2000  
  \*The optimal dilutions should be determined by the end user.

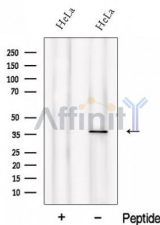
Reactivity:                          Human,Mouse,Rat

Storage:                                Rabbit IgG in phosphate buffered saline , pH 7.4, 150mM NaCl, 0.02% sodium azide and 50% glycerol. Store at -20 °C. Stable for 12 months from date of receipt.

Purification:                         The antiserum was purified by peptide affinity chromatography using SulfoLink™ Coupling Resin (Thermo Fisher Scientific).

Immunogen:                         A synthesized peptide derived from human PIH1D1, corresponding to a region within the internal amino acids.

Uniprot:                                Q9NWS0



Western blot analysis of extracts from HeLa cells, using PIH1D1 Ab. The lane on the left was treated with blocking peptide.

**IMPORTANT:** For western blot, incubate membrane with diluted primary Ab in 5% w/v milk , 1X TBS, 0.1% Tween@20 at 4°C with gentle shaking, overnight.

For Research Use Only. Not for use in diagnostic and therapeutic procedures. Not for resale without express authorization.