

HELLS Ab

Images(3)

Cat.#: DF12631
Size:

Concn.: ~1mg/ml
Source: Rabbit

Mol.Wt.: 97 kDa
Clonality: Polyclonal

Application:

WB 1:500-1:2000, IF/ICC 1:100-1:500

*The optimal dilutions should be determined by the end user.

Reactivity:

Human,Mouse,Rat,Monkey

Storage:

Rabbit IgG in phosphate buffered saline , pH 7.4, 150mM NaCl, 0.02% sodium azide and 50% glycerol. Store at -20 °C. Stable for 12 months from date of receipt.

Purification:

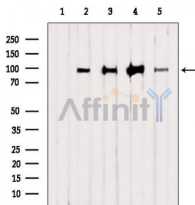
The antiserum was purified by peptide affinity chromatography using SulfoLink™ Coupling Resin (Thermo Fisher Scientific).

Immunogen:

A synthesized peptide derived from human HELLS, corresponding to a region within the internal amino acids.

Uniprot:

Q9NRZ9



Western blot analysis of extracts from various samples, using HELLS Ab.

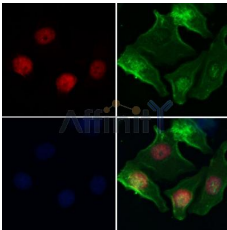
Lane 1: HeLa treated with blocking peptide;

Lane 2: HeLa;

Lane 3: COS-7;

Lane 4: HepG2;

Lane 5: MCF7.



DF12631 staining HeLa cells by IF/ICC. The samples were fixed with PFA and permeabilized in 0.1% Triton X-100, then blocked in 10% serum for 45 minutes at 25°C. Samples were then incubated with primary Ab(DF12631 1:200) and mouse anti-beta tubulin Ab(T0023 1:200) for 1 hour at 37°C. An AlexaFluor594 conjugated goat anti-rabbit IgG(H+L) Ab(Red) and an AlexaFluor488 conjugated goat anti-mouse IgG(H+L) Ab(Green) were used as the secondary Ab.

The nuclear counter stain is DAPI(blue).

IMPORTANT: For western blot, incubate membrane with diluted primary Ab in 5% w/v milk , 1X TBS, 0.1% Tween@20 at 4°C with gentle shaking, overnight.

For Research Use Only. Not for use in diagnostic and therapeutic procedures. Not for resale without express authorization.