

## DTX2 Ab

[Images\(2\)](#)

Cat.#: DF12526  
Size:

Concn.: ~1mg/ml  
Source: Rabbit

Mol.Wt.: 67 kDa  
Clonality: Polyclonal

Application:

WB 1:500-1:2000

\*The optimal dilutions should be determined by the end user.

Reactivity:

Human,Mouse,Rat

Storage:

Rabbit IgG in phosphate buffered saline , pH 7.4, 150mM NaCl, 0.02% sodium azide and 50% glycerol. Store at -20 °C. Stable for 12 months from date of receipt.

Purification:

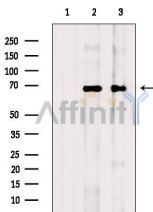
The antiserum was purified by peptide affinity chromatography using SulfoLink™ Coupling Resin (Thermo Fisher Scientific).

Immunogen:

A synthesized peptide derived from human DTX2, corresponding to a region within C-terminal amino acids.

Uniprot:

Q86UW9



Western blot analysis of extracts from various samples, using DTX2 Ab.

Lane 1: Hela cells, blocked with antigen-specific peptides,

Lane 2: Hela cells,

Lane 3: Rat brain.

**IMPORTANT:** For western blot, incubate membrane with diluted primary Ab in 5% w/v milk , 1X TBS, 0.1% Tween@20 at 4°C with gentle shaking, overnight.

For Research Use Only. Not for use in diagnostic and therapeutic procedures. Not for resale without express authorization.