

## Cleaved-IL-1 beta (Asp116) Ab

[References\(55\)](#) [Images\(37\)](#)

Cat.#: AF4006                      Concn.: ~1mg/ml                      Mol.Wt.: 17 kDa  
Size:                                      Source: Rabbit                              Clonality: Polyclonal

Application:                      WB 1:500-1:2000, IHC 1:50-1:200, IF/ICC 1:100-1:500  
\*The optimal dilutions should be determined by the end user.

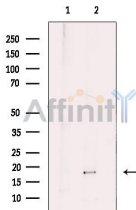
Reactivity:                      Human,Mouse,Rat,Zebrafish

Storage:                              Rabbit IgG in phosphate buffered saline , pH 7.4, 150mM NaCl, 0.02% sodium azide and 50% glycerol. Store at -20 °C. Stable for 12 months from date of receipt.

Purification:                      The antiserum was purified by peptide affinity chromatography using SulfoLink™ Coupling Resin (Thermo Fisher Scientific).

Immunogen:                      The antiserum was produced against synthesized peptide derived from human IL1 beta.

Uniprot:                              P01584



Western blot analysis of extracts from THP-1 cells lysates (treated with TPA/LPS), using Cleaved-IL-1 beta (Asp116) Ab. The lane on the left was treated with blocking peptide.

**IMPORTANT:** For western blot, incubate membrane with diluted primary Ab in 5% w/v milk , 1X TBS, 0.1% Tween@20 at 4°C with gentle shaking, overnight.

For Research Use Only. Not for use in diagnostic and therapeutic procedures. Not for resale without express authorization.