

## Phospho-CDK6 (Tyr292) Ab

[Images\(2\)](#)

Cat.#: AF2441                      Concn.: ~1mg/ml                      Mol.Wt.: 36kDa  
Size:                                      Source: Rabbit                              Clonality: Polyclonal

Application:                      WB 1:500-1:2000, IHC 1:50-1:200  
\*The optimal dilutions should be determined by the end user.

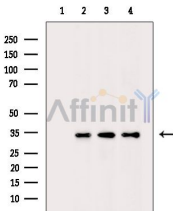
Reactivity:                      Human,Mouse

Storage:                              Rabbit IgG in phosphate buffered saline , pH 7.4, 150mM NaCl, 0.02% sodium azide and 50% glycerol. Store at -20 °C. Stable for 12 months from date of receipt.

Purification:                      The Ab is from purified rabbit serum by affinity purification via sequential chromatography on phospho-peptide and non-phospho-peptide affinity columns.

Immunogen:                      A synthesized peptide derived from human CDK6 around the phosphorylation site of Tyr292.

Uniprot:                              Q00534



Western blot analysis of extracts from 3T3-L1 cells(heat-shock treatment) HepG2 cells(heat-shock treatment) Hela cells(heat-shock treatment), using Phospho-CDK6 (Tyr292) Ab. The lane on the left was treated with blocking peptide.

**IMPORTANT:** For western blot, incubate membrane with diluted primary Ab in 5% w/v milk , 1X TBS, 0.1% Tween@20 at 4°C with gentle shaking, overnight.

For Research Use Only. Not for use in diagnostic and therapeutic procedures. Not for resale without express authorization.