

## Phospho-REPS1 (Ser709) Ab

[Images\(2\)](#)

Cat.#: AF2396                      Concn.: ~1mg/ml                      Mol.Wt.: 80~110kD  
Size:                                      Source: Rabbit                              Clonality: Polyclonal

Application:                      WB 1:500-1:2000, IHC 1:50-1:200  
\*The optimal dilutions should be determined by the end user.

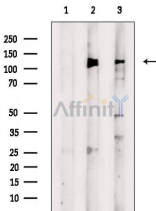
Reactivity:                      Human,Mouse,Monkey

Storage:                              Rabbit IgG in phosphate buffered saline , pH 7.4, 150mM NaCl, 0.02% sodium azide and 50% glycerol. Store at -20 °C. Stable for 12 months from date of receipt.

Purification:                      The Ab is from purified rabbit serum by affinity purification via sequential chromatography on phospho-peptide and non-phospho-peptide affinity columns.

Immunogen:                      A synthesized peptide derived from human REPS1 around the phosphorylation site of Ser709.

Uniprot:                              Q96D71



Western blot analysis of extracts from various samples, using Phospho-REPS1 (Ser709) Ab.

Lane 1: VERO cells(1hUV treatment), blocked with antigen-specific peptides,

Lane 2: VERO cells(1hUV treatment),

Lane 3: 3T3(heat shock treatment).

**IMPORTANT:** For western blot, incubate membrane with diluted primary Ab in 5% w/v milk , 1X TBS, 0.1% Tween@20 at 4°C with gentle shaking, overnight.

For Research Use Only. Not for use in diagnostic and therapeutic procedures. Not for resale without express authorization.