

Phospho-Bim (Ser77) Ab

[Images\(3\)](#)

Cat.#: AF2325
Size:

Concn.: ~1mg/ml
Source: Rabbit

Mol.Wt.: 26kDa
Clonality: Polyclonal

Application:

WB 1:500-1:2000, IHC 1:50-1:200

*The optimal dilutions should be determined by the end user.

Reactivity:

Human,Mouse,Rat

Storage:

Rabbit IgG in phosphate buffered saline , pH 7.4, 150mM NaCl, 0.02% sodium azide and 50% glycerol. Store at -20 °C. Stable for 12 months from date of receipt.

Purification:

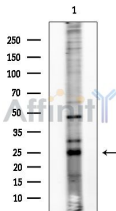
The Ab is from purified rabbit serum by affinity purification via sequential chromatography on phospho-peptide and non-phospho-peptide affinity columns.

Immunogen:

A synthesized peptide derived from human Bim around the phosphorylation site of Ser77.

Uniprot:

O43521



Western blot analysis of extracts from COLO205 cells(heat-shock treatment), using Phospho-Bim (Ser77) Ab at 1/1000 dilution.
Observed bands:25kD.

IMPORTANT: For western blot, incubate membrane with diluted primary Ab in 5% w/v milk , 1X TBS, 0.1% Tween@20 at 4°C with gentle shaking, overnight.

For Research Use Only. Not for use in diagnostic and therapeutic procedures. Not for resale without express authorization.