

## CHMP4B Ab

[Images\(3\)](#)

Cat.#: DF12256  
Size:

Concn.: ~1mg/ml  
Source: Rabbit

Mol.Wt.: 29-33 kDa  
Clonality: Polyclonal

Application:

WB 1:500-1:2000, IHC 1:50-1:200, IF/ICC 1:100-1:500  
\*The optimal dilutions should be determined by the end user.

Reactivity:

Human,Mouse,Rat

Storage:

Rabbit IgG in phosphate buffered saline , pH 7.4, 150mM NaCl, 0.02% sodium azide and 50% glycerol. Store at -20 °C. Stable for 12 months from date of receipt.

Purification:

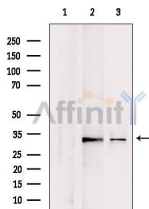
The antiserum was purified by peptide affinity chromatography using SulfoLink™ Coupling Resin (Thermo Fisher Scientific).

Immunogen:

A synthesized peptide derived from human CHMP4B, corresponding to a region within N-terminal amino acids.

Uniprot:

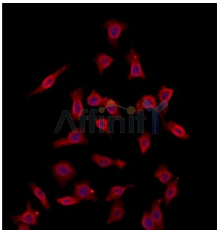
Q9H444



Western blot analysis of extracts from various samples, using CHMP4B Ab.  
Lane 1: rat brain treated with blocking peptide.

Lane 2: Rat brain;

Lane 3: Mouse brain;



DF12256 staining HepG2 by IF/ICC. The sample were fixed with PFA and permeabilized in 0.1% Triton X-100,then blocked in 10% serum for 45 minutes at 25°C. The primary Ab was diluted at 1/200 and incubated with the sample for 1 hour at 37°C. An Alexa Fluor 594 conjugated goat anti-rabbit IgG (H+L) Ab, diluted at 1/600, was used as the secondary Ab.

**IMPORTANT:** For western blot, incubate membrane with diluted primary Ab in 5% w/v milk , 1X TBS, 0.1% Tween@20 at 4°C with gentle shaking, overnight.

For Research Use Only. Not for use in diagnostic and therapeutic procedures. Not for resale without express authorization.