

CHCHD3 Ab

[Images\(3\)](#)

Cat.#: DF12254
Size:

Concn.: ~1mg/ml
Source: Rabbit

Mol.Wt.: 26 kDa, 20 kDa
Clonality: Polyclonal

Application:

WB 1:500-1:2000, IHC 1:50-1:200, IF/ICC 1:100-1:500
*The optimal dilutions should be determined by the end user.

Reactivity:

Human,Mouse

Storage:

Rabbit IgG in phosphate buffered saline , pH 7.4, 150mM NaCl, 0.02% sodium azide and 50% glycerol. Store at -20 °C. Stable for 12 months from date of receipt.

Purification:

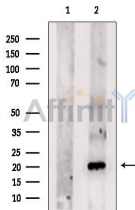
The antiserum was purified by peptide affinity chromatography using SulfoLink™ Coupling Resin (Thermo Fisher Scientific).

Immunogen:

A synthesized peptide derived from human CHCHD3, corresponding to a region within N-terminal amino acids.

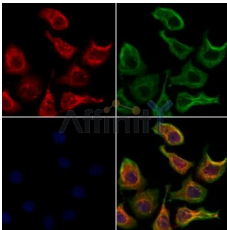
Uniprot:

Q9NX63



Western blot analysis of extracts from Mouse liver, using CHCHD3 Ab. The lane on the left was treated with blocking peptide.

Observed bands: 20 kDa.



DF12254 staining Hela cells by IF/ICC. The samples were fixed with PFA and permeabilized in 0.1% Triton X-100, then blocked in 10% serum for 45 minutes at 25°C. Samples were then incubated with primary Ab (DF12254 1:200) and mouse anti-beta tubulin Ab (T0023 1:200) for 1 hour at 37°C. An AlexaFluor594 conjugated goat anti-rabbit IgG(H+L) Ab (Red) and an AlexaFluor488 conjugated goat anti-mouse IgG(H+L) Ab (Green) were used as the secondary Ab.

The nuclear counter stain is DAPI (blue).

IMPORTANT: For western blot, incubate membrane with diluted primary Ab in 5% w/v milk, 1X TBS, 0.1% Tween@20 at 4°C with gentle shaking, overnight.

For Research Use Only. Not for use in diagnostic and therapeutic procedures. Not for resale without express authorization.