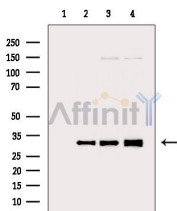


## Phospho-RPS6 (Ser235) Ab

[References\(3\)](#) [Images\(8\)](#)

Cat.#: AF3354 Size:	Concn.: ~1mg/ml Source: Rabbit	Mol.Wt.: 32kDa Clonality: Polyclonal
Application:	WB 1:500-1:2000, IF/ICC 1:100-1:500 *The optimal dilutions should be determined by the end user.	
Reactivity:	Human,Mouse,Rat	
Storage:	Rabbit IgG in phosphate buffered saline , pH 7.4, 150mM NaCl, 0.02% sodium azide and 50% glycerol. Store at -20 °C. Stable for 12 months from date of receipt.	
Purification:	The Ab is from purified rabbit serum by affinity purification via sequential chromatography on phospho-peptide and non-phospho-peptide affinity columns.	
Immunogen:	A synthesized peptide derived from human RPS6 around the phosphorylation site of Ser235.	
Uniprot:	P62753	
Description:	Ribosomes, the organelles that catalyze protein synthesis, consist of a small 40S subunit and a large 60S subunit. Together these subunits are composed of 4 RNA species and approximately 80 structurally distinct proteins. This gene encodes a cytoplasmic ribosomal protein that is a component of the 40S subunit.	



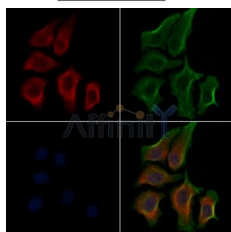
Western blot analysis of extracts from various samples, using Phospho-RPS6 (Ser235) Ab.

Lane 1: Mouse kidney, blocked with antigen-specific peptides.

Lane 2: Mouse kidney.

Lane 3: HepG2 cells(serum starvation treatment).

Lane 4: HeLa cells(heat-shock treatment).



AF3354 staining HepG2 cells(30min of 4uM Forskolin treatment) by IF/ICC. The samples were fixed with PFA and permeabilized in 0.1% Triton X-100,then blocked in 10% serum for 45 minutes at 25°C. Samples were then incubated with primary Ab(AF3354) and mouse anti-beta tubulin Ab(T0023) for 1 hour at 37°C. An AlexaFluor594 conjugated goat anti-rabbit IgG(H+L) Ab(Red) and an AlexaFluor488 conjugated goat anti-mouse IgG(H+L) Ab(Green) were used as the secondary Ab. The nuclear counter stain is DAPI(blue).

**IMPORTANT:** For western blot, incubate membrane with diluted primary Ab

in 5% w/v milk , 1X TBS, 0.1% Tween@20 at 4°C with gentle shaking,  
overnight.

For Research Use Only. Not for use in diagnostic and therapeutic  
procedures. Not for resale without express authorization.