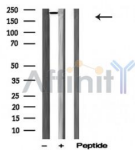


## ALK Ab

[Images\(1\)](#)

|               |  |                                       |
|---------------|--|---------------------------------------|
| Cat.#: AF4801 | Concn.: ~1mg/ml  | Mol.Wt.: 80kD(NPM-ALK)<br>220kDa(ALK) |
| Size:         | Source: Rabbit   | Clonality: Polyclonal                 |
| Application:  | WB 1:500-1:2000<br>*The optimal dilutions should be determined by the end user.  |                                       |
| Reactivity:   | Human,Mouse,Rat  |                                       |
| Storage:      | Rabbit IgG in phosphate buffered saline , pH 7.4, 150mM NaCl, 0.02% sodium azide and 50% glycerol. Store at -20 °C. Stable for 12 months from date of receipt. |                                       |
| Purification: | The antiserum was purified by peptide affinity chromatography using SulfoLink™ Coupling Resin (Thermo Fisher Scientific).                                      |                                       |
| Immunogen:    | A synthesized peptide derived from human ALK, corresponding to a region within the internal amino acids.   |                                       |
| Uniprot:      | Q9UM73   |                                       |



Western blot analysis of ALK in lysates of Sup-M2, using ALK Ab(AF4801).

**IMPORTANT:** For western blot, incubate membrane with diluted primary Ab in 5% w/v milk , 1X TBS, 0.1% Tween@20 at 4°C with gentle shaking, overnight.

For Research Use Only. Not for use in diagnostic and therapeutic procedures. Not for resale without express authorization.