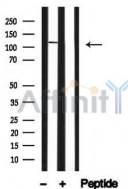


## MCSF Receptor Ab

[Images\(1\)](#)

Cat.#: AF4694                                      Concn.: ~1mg/ml                                      Mol.Wt.: 110~200kDa  
Size:    Source: Rabbit    Clonality: Polyclonal

Application:                                      WB 1:500-1:2000  
\*The optimal dilutions should be determined by the end user.  
Reactivity:                                        Human,Mouse,Rat  
Storage:    Rabbit IgG in phosphate buffered saline , pH 7.4, 150mM NaCl, 0.02% sodium azide and 50% glycerol. Store at -20 °C. Stable for 12 months from date of receipt.  
Purification:                                     The antiserum was purified by peptide affinity chromatography using SulfoLink™ Coupling Resin (Thermo Fisher Scientific).  
Immunogen:                                       A synthesized peptide derived from human MCSF Receptor, corresponding to a region within the internal amino acids.  
Uniprot:    P07333



Western blot analysis of M-CSF Receptor in lysates of 293, using M-CSF Receptor Ab(AF4694).

**IMPORTANT:** For western blot, incubate membrane with diluted primary Ab in 5% w/v milk , 1X TBS, 0.1% Tween@20 at 4°C with gentle shaking, overnight.

For Research Use Only. Not for use in diagnostic and therapeutic procedures. Not for resale without express authorization.