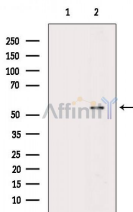


## DOK2 Ab

[Images\(2\)](#)

Cat.#: AF4683                      Concn.: ~1mg/ml                      Mol.Wt.: 56kDa  
Size:                                      Source: Rabbit                              Clonality: Polyclonal

Application:                      WB 1:500-1:2000  
  \*The optimal dilutions should be determined by the end user.  
Reactivity:                      Human,Mouse,Rat  
Storage:                              Rabbit IgG in phosphate buffered saline , pH 7.4, 150mM NaCl, 0.02% sodium azide and 50% glycerol. Store at -20 °C. Stable for 12 months from date of receipt.  
Purification:                      The antiserum was purified by peptide affinity chromatography using SulfoLink™ Coupling Resin (Thermo Fisher Scientific).  
Immunogen:                      A synthesized peptide derived from human DOK2, corresponding to a region within C-terminal amino acids.  
Uniprot:                              O60496



Western blot analysis of extracts from PC12(H<sub>2</sub>O<sub>2</sub> treatment), using DOK2 Ab. The lane on the left was treated with blocking peptide.

**IMPORTANT:** For western blot, incubate membrane with diluted primary Ab in 5% w/v milk , 1X TBS, 0.1% Tween@20 at 4°C with gentle shaking, overnight.

For Research Use Only. Not for use in diagnostic and therapeutic procedures. Not for resale without express authorization.