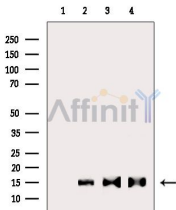


Histone H2A Ab

[Images\(3\)](#)

Cat.#: AF4654	Concn.: ~1mg/ml	Mol.Wt.: 14kDa
Size:	Source: Rabbit	Clonality: Polyclonal
Application:	WB 1:500-1:2000 *The optimal dilutions should be determined by the end user.	
Reactivity:	Human,Mouse,Rat	
Storage:	Rabbit IgG in phosphate buffered saline , pH 7.4, 150mM NaCl, 0.02% sodium azide and 50% glycerol. Store at -20 °C. Stable for 12 months from date of receipt.	
Purification:	The antiserum was purified by peptide affinity chromatography using SulfoLink™ Coupling Resin (Thermo Fisher Scientific).	
Immunogen:	A synthesized peptide derived from human Histone H2A, corresponding to a region within N-terminal amino acids.	
Uniprot:	P04908/P0C0S8/P20671/Q16777/Q6F113/Q7L7L0/Q8IUE6/Q93077	



Western blot analysis of extracts from various samples, using Histone H2A Ab.

- Lane 1: Rat liver, blocked with antigen-specific peptides.
- Lane 2: Rat liver.
- Lane 3: Hepg2 cells(h2o2 treatment).
- Lane 4: Raw264.7 cells(uv treatment).

IMPORTANT: For western blot, incubate membrane with diluted primary Ab in 5% w/v milk , 1X TBS, 0.1% Tween@20 at 4°C with gentle shaking, overnight.

For Research Use Only. Not for use in diagnostic and therapeutic procedures. Not for resale without express authorization.