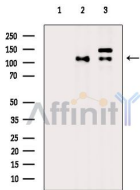


Phospho-Eg5 (Thr926) Ab

[Images\(5\)](#)

Cat.#: AF4445	Concn.: ~1mg/ml	Mol.Wt.: 120kDa
Size:	Source: Rabbit	Clonality: Polyclonal

Application:	WB 1:500-1:2000, IHC 1:50-1:200 *The optimal dilutions should be determined by the end user.
Reactivity:	Human,Mouse,Rat
Storage:	Rabbit IgG in phosphate buffered saline , pH 7.4, 150mM NaCl, 0.02% sodium azide and 50% glycerol. Store at -20 °C. Stable for 12 months from date of receipt.
Purification:	The Ab is from purified rabbit serum by affinity purification via sequential chromatography on phospho-peptide and non-phospho-peptide affinity columns.
Immunogen:	A synthesized peptide derived from human Eg5 around the phosphorylation site of Thr926.
Uniprot:	P52732

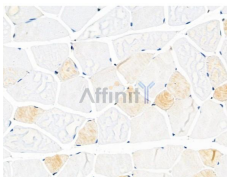


Western blot analysis of extracts from various samples, using Phospho-Eg5 (Thr926) Ab.

Lane 1: Hepg2 cells (serum starvation treatment), blocked with antigen-specific peptides.

Lane 2: Hepg2 cells (serum starvation treatment).

Lane 3: Raw264.7 cells (heat-shock treatment).



AF4445 at 1/100 staining Mouse muscle tissue by IHC-P. The sample was formaldehyde fixed and a heat mediated antigen retrieval step in citrate buffer was performed. The sample was then blocked and incubated with the primary Ab at 4°C overnight. An HRP conjugated anti-Rabbit Ab was used as the secondary Ab.

IMPORTANT: For western blot, incubate membrane with diluted primary Ab in 5% w/v milk , 1X TBS, 0.1% Tween@20 at 4°C with gentle shaking, overnight.

For Research Use Only. Not for use in diagnostic and therapeutic procedures. Not for resale without express authorization.