

Phospho-Crk p38 (Tyr221) Ab

[Images\(3\)](#)

Cat.#: AF3323 Concn.: ~1mg/ml Mol.Wt.: 42kDa
Size: Source: Rabbit Clonality: Polyclonal

Application: WB 1:500-1:2000, IF/ICC 1:100-1:500
*The optimal dilutions should be determined by the end user.

Reactivity: Human,Mouse,Rat,Monkey

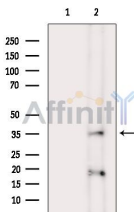
Storage: Rabbit IgG in phosphate buffered saline , pH 7.4, 150mM NaCl, 0.02% sodium azide and 50% glycerol. Store at -20 °C. Stable for 12 months from date of receipt.

Purification: The Ab is from purified rabbit serum by affinity purification via sequential chromatography on phospho-peptide and non-phospho-peptide affinity columns.

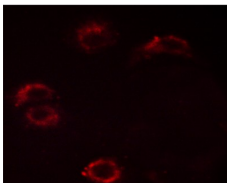
Immunogen: A synthesized peptide derived from human Crk p38 around the phosphorylation site of Tyr221.

Uniprot: P46108

Description: Crk an adaptor protein with an SH2-SH3-SH3 domain structure. Recruits cytoplasmic proteins through SH2-phospho-tyrosine interaction. Phosphorylated by Abl, IGF-IR and EGFR.



Western blot analysis of extracts from Rat spleen, using Phospho-Crk p38 (Tyr221) Ab. The lane on the left was treated with blocking peptide.



AF3323 staining HUVEC cells by ICC/IF. Cells were fixed with PFA and permeabilized in 0.1% saponin prior to blocking in 10% serum for 45 minutes at 37°C. The primary Ab was diluted 1/400 and incubated with the sample for 1 hour at 37°C. A Alexa Fluor 594 conjugated goat polyclonal to rabbit IgG (H+L), diluted 1/600 was used as secondary Ab.

IMPORTANT: For western blot, incubate membrane with diluted primary Ab in 5% w/v milk , 1X TBS, 0.1% Tween@20 at 4°C with gentle shaking, overnight.



Affinity Biosciences

website:www.affbiotech.com

order:order@affbiotech.com

For Research Use Only. Not for use in diagnostic and therapeutic procedures. Not for resale without express authorization.