

## Phospho-MEK4/MKK4 (Ser80) Ab

[References\(3\)](#) [Images\(3\)](#)

Cat.#: AF3321  
Size:

Concn.: ~1mg/ml  
Source: Rabbit

Mol.Wt.: 44kDa  
Clonality: Polyclonal

Application:

WB 1:500-1:2000, IHC 1:50-1:200  
\*The optimal dilutions should be determined by the end user.

Reactivity:

Human,Mouse,Rat

Storage:

Rabbit IgG in phosphate buffered saline , pH 7.4, 150mM NaCl, 0.02% sodium azide and 50% glycerol. Store at -20 °C. Stable for 12 months from date of receipt.

Purification:

The Ab is from purified rabbit serum by affinity purification via sequential chromatography on phospho-peptide and non-phospho-peptide affinity columns.

Immunogen:

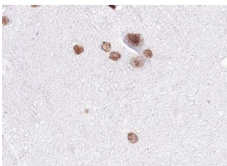
A synthesized peptide derived from human SEK1/MKK4 around the phosphorylation site of Ser80.

Uniprot:

P45985

Description:

MKK4 dual specificity kinase of the STE7 family that phosphorylates and activates JNK1 and -2 as well as p38 but not ERK1 or -2. Mediates cellular responses to various cellular stresses and inflammatory cytokines. Phosphorylation by Akt inhibits MKK4 and suppresses stress-activated signal transduction.



AF3321 at 1/100 staining human brain tissue sections by IHC-P. The tissue was formaldehyde fixed and a heat mediated antigen retrieval step in citrate buffer was performed. The tissue was then blocked and incubated with the Ab for 1.5 hours at 22°C. An HRP conjugated goat anti-rabbit Ab was used as the secondary Ab.

**IMPORTANT:** For western blot, incubate membrane with diluted primary Ab in 5% w/v milk , 1X TBS, 0.1% Tween@20 at 4°C with gentle shaking, overnight.

For Research Use Only. Not for use in diagnostic and therapeutic procedures. Not for resale without express authorization.