

## ASPP2 Ab

[Images\(3\)](#)

Cat.#: AF4619                                  Concn.: ~1mg/ml                                  Mol.Wt.: 126kDa  
Size:                                                  Source: Rabbit                                          Clonality: Polyclonal

Application:                                          WB 1:500-1:2000  
                                                              \*The optimal dilutions should be determined by the end user.

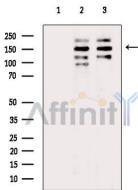
Reactivity:                                          Human,Mouse,Rat

Storage:                                              Rabbit IgG in phosphate buffered saline , pH 7.4, 150mM NaCl, 0.02% sodium azide and 50% glycerol. Store at -20 °C. Stable for 12 months from date of receipt.

Purification:                                          The antiserum was purified by peptide affinity chromatography using SulfoLink™ Coupling Resin (Thermo Fisher Scientific).

Immunogen:                                          A synthesized peptide derived from human ASPP2, corresponding to a region within the internal amino acids.

Uniprot:                                                Q13625



Western blot analysis of extracts from various samples, using ASPP2 Ab.  
Lane 1: Hepg2 cells(h2o2 treatment), blocked with antigen-specific peptides.  
Lane 2: Hepg2 cells(h2o2 treatment).  
Lane 3: Raw264.7 cells(uv treatment).

**IMPORTANT:** For western blot, incubate membrane with diluted primary Ab in 5% w/v milk , 1X TBS, 0.1% Tween@20 at 4°C with gentle shaking, overnight.

For Research Use Only. Not for use in diagnostic and therapeutic procedures. Not for resale without express authorization.