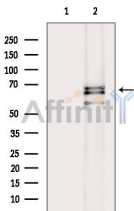


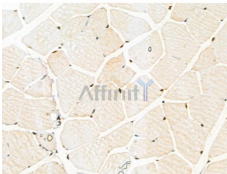
Phospho-PAK1 /PAK2 (Thr423/Thr402) Ab

[References\(2\)](#) [Images\(5\)](#)

Cat.#: AF4463	Concn.: ~1mg/ml	Mol.Wt.: 61-67kDa (PAK2),68-74 kDa (PAK1/3)
Size:	Source: Rabbit	Clonality: Polyclonal
Application:	WB 1:500-1:2000, IHC 1:50-1:200 *The optimal dilutions should be determined by the end user.	
Reactivity:	Human,Mouse,Rat	
Storage:	Rabbit IgG in phosphate buffered saline , pH 7.4, 150mM NaCl, 0.02% sodium azide and 50% glycerol. Store at -20 °C. Stable for 12 months from date of receipt.	
Purification:	The Ab is from purified rabbit serum by affinity purification via sequential chromatography on phospho-peptide and non-phospho-peptide affinity columns.	
Immunogen:	A synthesized peptide derived from human PAK1 around the phosphorylation site of Thr423.	
Uniprot:	Q13153/Q13177	



Western blot analysis of extracts from 3T3-L1 cells(heat-shock treatment), using Phospho-PAK1 /PAK2 (Thr423/Thr402) Ab. The lane on the left was treated with blocking peptide.



AF4463 at 1/100 staining Mouse muscle tissue by IHC-P. The sample was formaldehyde fixed and a heat mediated antigen retrieval step in citrate buffer was performed. The sample was then blocked and incubated with the primary Ab at 4°C overnight. An HRP conjugated anti-Rabbit Ab was used as the secondary Ab.

IMPORTANT: For western blot, incubate membrane with diluted primary Ab in 5% w/v milk , 1X TBS, 0.1% Tween@20 at 4°C with gentle shaking, overnight.