

Phospho-p130 Cas (Tyr165) Ab

[Images\(3\)](#)

Cat.#: AF4448 Concn.: ~1mg/ml Mol.Wt.: 100~130kDa
Size: Source: Rabbit Clonality: Polyclonal

Application: WB 1:500-1:2000

*The optimal dilutions should be determined by the end user.

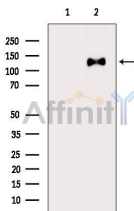
Reactivity: Human,Mouse,Rat

Storage: Rabbit IgG in phosphate buffered saline , pH 7.4, 150mM NaCl, 0.02% sodium azide and 50% glycerol. Store at -20 °C. Stable for 12 months from date of receipt.

Purification: The Ab is from purified rabbit serum by affinity purification via sequential chromatography on phospho-peptide and non-phospho-peptide affinity columns.

Immunogen: A synthesized peptide derived from human p130 Cas around the phosphorylation site of Tyr165.

Uniprot: P56945



Western blot analysis of extracts from HepG2 cells (serum starvation treatment), using Phospho-p130 Cas (Tyr165) Ab. The lane on the left was treated with blocking peptide.

IMPORTANT: For western blot, incubate membrane with diluted primary Ab in 5% w/v milk, 1X TBS, 0.1% Tween@20 at 4°C with gentle shaking, overnight.

For Research Use Only. Not for use in diagnostic and therapeutic procedures. Not for resale without express authorization.