

## Phospho-NUR77 (Ser351) Ab

[Images\(5\)](#)

Cat.#: AF4412                      Concn.: ~1mg/ml                      Mol.Wt.: 70-80kDa  
Size:                                      Source: Rabbit                              Clonality: Polyclonal

Application:                      WB 1:500-1:2000, IHC 1:50-1:200  
\*The optimal dilutions should be determined by the end user.

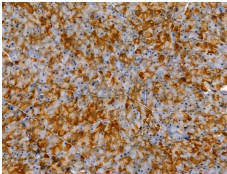
Reactivity:                      Human,Mouse,Rat

Storage:                              Rabbit IgG in phosphate buffered saline , pH 7.4, 150mM NaCl, 0.02% sodium azide and 50% glycerol. Store at -20 °C. Stable for 12 months from date of receipt.

Purification:                      The Ab is from purified rabbit serum by affinity purification via sequential chromatography on phospho-peptide and non-phospho-peptide affinity columns.

Immunogen:                      A synthesized peptide derived from human NUR77 around the phosphorylation site of Ser351.

Uniprot:                              P22736



AF4412 at 1/100 staining Mouse pancreatic tissue by IHC-P. The sample was formaldehyde fixed and a heat mediated antigen retrieval step in citrate buffer was performed. The sample was then blocked and incubated with the primary Ab at 4°C overnight. An HRP conjugated anti-Rabbit Ab was used as the secondary Ab.

**IMPORTANT:** For western blot, incubate membrane with diluted primary Ab in 5% w/v milk , 1X TBS, 0.1% Tween@20 at 4°C with gentle shaking, overnight.

For Research Use Only. Not for use in diagnostic and therapeutic procedures. Not for resale without express authorization.