

DYRK1A/B Ab

[Images\(3\)](#)

Cat.#: DF10329
Size:

Concn.: ~1mg/ml
Source: Rabbit

Mol.Wt.: 70KD
Clonality: Polyclonal

Application:

WB 1:500-1:2000

*The optimal dilutions should be determined by the end user.

Reactivity:

Human,Mouse,Rat,Monkey

Storage:

Rabbit IgG in phosphate buffered saline , pH 7.4, 150mM NaCl, 0.02% sodium azide and 50% glycerol. Store at -20 °C. Stable for 12 months from date of receipt.

Purification:

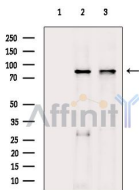
The antiserum was purified by peptide affinity chromatography using SulfoLink™ Coupling Resin (Thermo Fisher Scientific).

Immunogen:

A synthesized peptide derived from human DYRK1A/B, corresponding to a region within the internal amino acids.

Uniprot:

Q13627/Q9Y463



Western blot analysis of extracts from various samples, using DYRK1A/B Ab.

Lane 1: Ec304 cells(heat-shock treatment), blocked with antigen-specific peptides.

Lane 2: Ec304 cells(heat-shock treatment).

Lane 3: Cos-7 cells(heat-shock treatment).

IMPORTANT: For western blot, incubate membrane with diluted primary Ab in 5% w/v milk , 1X TBS, 0.1% Tween@20 at 4°C with gentle shaking, overnight.

For Research Use Only. Not for use in diagnostic and therapeutic procedures. Not for resale without express authorization.