

Rac1/cdc42 Ab

[References\(3\)](#) [Images\(5\)](#)

Cat.#: AF7828 Concn.: ~1mg/ml Mol.Wt.: 28kDa, 17 kDa
Size: Source: Rabbit Clonality: Polyclonal

Application: WB 1:500-1:2000
 *The optimal dilutions should be determined by the end user.

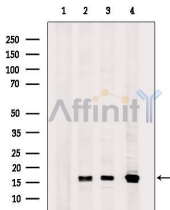
Reactivity: Human,Mouse,Rat

Storage: Rabbit IgG in phosphate buffered saline , pH 7.4, 150mM NaCl, 0.02% sodium azide and 50% glycerol. Store at -20 °C. Stable for 12 months from date of receipt.

Purification: The antiserum was purified by peptide affinity chromatography using SulfoLink™ Coupling Resin (Thermo Fisher Scientific).

Immunogen: A synthesized peptide derived from human Rac1/cdc42, corresponding to a region within the internal amino acids.

Uniprot: P63000/P60953



Western blot analysis of extracts from various samples, using Rac1/cdc42 Ab.
Lane 1: 293, treated with blocking peptide;
Lane 2: 293;
Lane 3: Hela cells;
Lane 4: Mcf7.
Observed bands: 17 kDa.

IMPORTANT: For western blot, incubate membrane with diluted primary Ab in 5% w/v milk , 1X TBS, 0.1% Tween@20 at 4°C with gentle shaking, overnight.

For Research Use Only. Not for use in diagnostic and therapeutic procedures. Not for resale without express authorization.