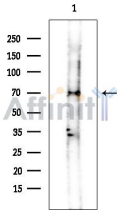


## WEE1 Ab

[Images\(3\)](#)

|               |  |                                     |
|---------------|--|-------------------------------------|
| Cat.#: AF7791 | Concn.: ~1mg/ml  | Mol.Wt.: 55kD(isoform),<br>72~100kD |
| Size:         | Source: Rabbit   | Clonality: Polyclonal               |
| Application:  | WB 1:500-1:2000<br>*The optimal dilutions should be determined by the end user.  |                                     |
| Reactivity:   | Human,Mouse,Rat  |                                     |
| Storage:      | Rabbit IgG in phosphate buffered saline , pH 7.4, 150mM NaCl, 0.02% sodium azide and 50% glycerol. Store at -20 °C. Stable for 12 months from date of receipt. |                                     |
| Purification: | The antiserum was purified by peptide affinity chromatography using SulfoLink™ Coupling Resin (Thermo Fisher Scientific).                                      |                                     |
| Immunogen:    | A synthesized peptide derived from human WEE1, corresponding to a region within the internal amino acids.  |                                     |
| Uniprot:      | P30291   |                                     |



**IMPORTANT:** For western blot, incubate membrane with diluted primary Ab in 5% w/v milk , 1X TBS, 0.1% Tween@20 at 4°C with gentle shaking, overnight.

For Research Use Only. Not for use in diagnostic and therapeutic procedures. Not for resale without express authorization.