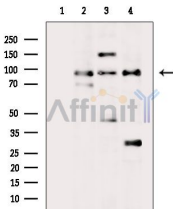


## CDC5L Ab

[Images\(3\)](#)

Cat.#: AF7563	Concn.: ~1mg/ml	Mol.Wt.: 92kDa
Size:	Source: Rabbit	Clonality: Polyclonal

Application:	WB 1:500-1:2000 *The optimal dilutions should be determined by the end user.
Reactivity:	Human,Mouse,Rat,Monkey
Storage:	Rabbit IgG in phosphate buffered saline , pH 7.4, 150mM NaCl, 0.02% sodium azide and 50% glycerol. Store at -20 °C. Stable for 12 months from date of receipt.
Purification:	The antiserum was purified by peptide affinity chromatography using SulfoLink™ Coupling Resin (Thermo Fisher Scientific).
Immunogen:	A synthesized peptide derived from human CDC5L, corresponding to a region within the internal amino acids.
Uniprot:	Q99459



Western blot analysis of extracts from various samples, using CDC5L Ab.  
Lane 1: Mouse spleen, blocked with antigen-specific peptides.  
Lane 2: Mouse spleen.  
Lane 3: Mcf7 cells(heat-shock treatment).  
Lane 4: P19 cells(h2o2 treatment).

**IMPORTANT:** For western blot, incubate membrane with diluted primary Ab in 5% w/v milk , 1X TBS, 0.1% Tween@20 at 4°C with gentle shaking, overnight.

For Research Use Only. Not for use in diagnostic and therapeutic procedures. Not for resale without express authorization.