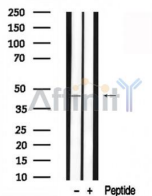


## TTF1 Ab

[Images\(1\)](#)

|               |                                                                                                                                                                |                       |
|---------------|----------------------------------------------------------------------------------------------------------------------------------------------------------------|-----------------------|
| Cat.#: AF7547 | Concn.: ~1mg/ml                                                                                                                                                | Mol.Wt.: 42kDa        |
| Size:         | Source: Rabbit                                                                                                                                                 | Clonality: Polyclonal |
| Application:  | WB 1:500-1:2000<br>*The optimal dilutions should be determined by the end user.                                                                                |                       |
| Reactivity:   | Human,Mouse,Rat                                                                                                                                                |                       |
| Storage:      | Rabbit IgG in phosphate buffered saline , pH 7.4, 150mM NaCl, 0.02% sodium azide and 50% glycerol. Store at -20 °C. Stable for 12 months from date of receipt. |                       |
| Purification: | The antiserum was purified by peptide affinity chromatography using SulfoLink™ Coupling Resin (Thermo Fisher Scientific).                                      |                       |
| Immunogen:    | A synthesized peptide derived from human TTF1, corresponding to a region within N-terminal amino acids.                                                        |                       |
| Uniprot:      | P43699                                                                                                                                                         |                       |



Western blot analysis of TTF1 in lysates of HeLa , using TTF1 Ab(AF7547).

**IMPORTANT:** For western blot, incubate membrane with diluted primary Ab in 5% w/v milk , 1X TBS, 0.1% Tween@20 at 4°C with gentle shaking, overnight.

For Research Use Only. Not for use in diagnostic and therapeutic procedures. Not for resale without express authorization.