

TRAF7 Ab

[Images\(2\)](#)

Cat.#: AF7546	Concn.: ~1mg/ml	Mol.Wt.: 67kD
Size:	Source: Rabbit	Clonality: Polyclonal

Application: WB 1:500-1:2000, IF/ICC 1:100-1:500

*The optimal dilutions should be determined by the end user.

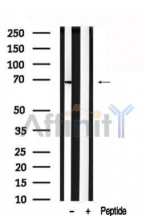
Reactivity: Human,Mouse,Rat

Storage: Rabbit IgG in phosphate buffered saline , pH 7.4, 150mM NaCl, 0.02% sodium azide and 50% glycerol. Store at -20 °C. Stable for 12 months from date of receipt.

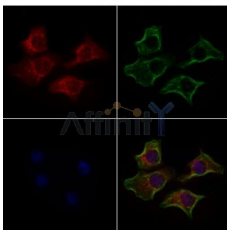
Purification: The antiserum was purified by peptide affinity chromatography using SulfoLink™ Coupling Resin (Thermo Fisher Scientific).

Immunogen: A synthesized peptide derived from human TRAF7, corresponding to a region within N-terminal amino acids.

Uniprot: Q6Q0C0



Western blot analysis of extracts from Human fetal stomach tissue sample,using TRAF7 Ab(AF7546).



AF7546 staining HepG2 cells by IF/ICC. The samples were fixed with PFA and permeabilized in 0.1% Triton X-100,then blocked in 10% serum for 45 minutes at 25°C. Samples were then incubated with primary Ab(AF7546 1:200) and mouse anti-beta tubulin Ab(T0023 1:200) for 1 hour at 37°C. An AlexaFluor594 conjugated goat anti-rabbit IgG(H+L) Ab(Red) and an AlexaFluor488 conjugated goat anti-mouse IgG(H+L) Ab(Green) were used as the secondary Ab.

The nuclear counter stain is DAPI(blue).

IMPORTANT: For western blot, incubate membrane with diluted primary Ab in 5% w/v milk , 1X TBS, 0.1% Tween@20 at 4°C with gentle shaking, overnight.

For Research Use Only. Not for use in diagnostic and therapeutic procedures. Not for resale without express authorization.