

Phospho-SHIP1 (Tyr865) Ab

[Images\(2\)](#)

Cat.#: AF7426 Concn.: ~1mg/ml Mol.Wt.: 100~160kD
Size: Source: Rabbit Clonality: Polyclonal

Application: WB 1:500-1:2000
 *The optimal dilutions should be determined by the end user.

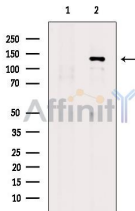
Reactivity: Human

Storage: Rabbit IgG in phosphate buffered saline , pH 7.4, 150mM NaCl, 0.02% sodium azide and 50% glycerol. Store at -20 °C. Stable for 12 months from date of receipt.

Purification: The Ab is from purified rabbit serum by affinity purification via sequential chromatography on phospho-peptide and non-phospho-peptide affinity columns.

Immunogen: A synthesized peptide derived from human SHIP1 around the phosphorylation site of Tyr865.

Uniprot: Q92835



Western blot analysis of extracts from serum starvation treated EC304 cells, using Phospho-SHIP1 (Tyr865) Ab. The lane on the left was treated with blocking peptide.

Observed bands: 80 kDa.

IMPORTANT: For western blot, incubate membrane with diluted primary Ab in 5% w/v milk , 1X TBS, 0.1% Tween@20 at 4°C with gentle shaking, overnight.

For Research Use Only. Not for use in diagnostic and therapeutic procedures. Not for resale without express authorization.