

Phospho-ERK1/2 (Thr202) Ab

[References\(2\)](#) [Images\(3\)](#)

Cat.#: AF3240 Concn.: ~1mg/ml Mol.Wt.: 44kDa,42kDa
Size: Source: Rabbit Clonality: Polyclonal

Application: WB 1:500-1:2000
 *The optimal dilutions should be determined by the end user.

Reactivity: Human,Mouse,Rat

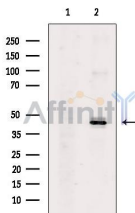
Storage: Rabbit IgG in phosphate buffered saline , pH 7.4, 150mM NaCl, 0.02% sodium azide and 50% glycerol. Store at -20 °C. Stable for 12 months from date of receipt.

Purification: The Ab is from purified rabbit serum by affinity purification via sequential chromatography on phospho-peptide and non-phospho-peptide affinity columns.

Immunogen: A synthesized peptide derived from human p44/42 MAP Kinase around the phosphorylation site of Thr202.

Uniprot: P27361/P28482

Description: p42 MAP kinase plays a critical role in the regulation of cell growth and differentiation. Activated by a wide variety of extracellular signals including growth and neurotrophic factors, cytokines, hormones and neurotransmitters.



Western blot analysis of extracts from heat-shock treated Hela cells, using Phospho-ERK1/2 (Thr202) Ab. The lane on the left was treated with blocking peptide.

IMPORTANT: For western blot, incubate membrane with diluted primary Ab in 5% w/v milk , 1X TBS, 0.1% Tween@20 at 4°C with gentle shaking, overnight.

For Research Use Only. Not for use in diagnostic and therapeutic procedures. Not for resale without express authorization.