

## Phospho-MEF2D (Ser180) Ab

[Images\(4\)](#)

Cat.#: AF7388                                      Concn.: ~1mg/ml                                      Mol.Wt.: 56kDa  
 Size:    Source: Rabbit    Clonality: Polyclonal

Application:                                      WB 1:500-1:2000, IHC 1:50-1:200  
 \*The optimal dilutions should be determined by the end user.

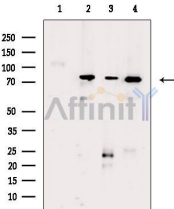
Reactivity:    Human,Mouse,Rat

Storage:    Rabbit IgG in phosphate buffered saline , pH 7.4, 150mM NaCl, 0.02% sodium azide and 50% glycerol. Store at -20 °C. Stable for 12 months from date of receipt.

Purification:                                      The Ab is from purified rabbit serum by affinity purification via sequential chromatography on phospho-peptide and non-phospho-peptide affinity columns.

Immunogen:    A synthesized peptide derived from human MEF2D around the phosphorylation site of Ser180.

Uniprot:    Q14814



Western blot analysis of extracts from various samples, using Phospho-MEF2D (Ser180) Ab.

Lane 1: Heat-shock treated HepG2 cells, blocked with antigen-specific peptides,  
 Lane 2: Heat-shock treated HepG2 cells,  
 Lane 3: H2O2 treated A2780 cells,  
 Lane 4: UV treated MDA-MB-231 cells.



AF7388 at 1/100 staining rat heart tissue sections by IHC-P. The tissue was formaldehyde fixed and a heat mediated antigen retrieval step in citrate buffer was performed. The tissue was then blocked and incubated with the Ab for 1.5 hours at 22°C. An HRP conjugated goat anti-rabbit Ab was used as the secondary Ab.

**IMPORTANT:** For western blot, incubate membrane with diluted primary Ab in 5% w/v milk , 1X TBS, 0.1% Tween@20 at 4°C with gentle shaking, overnight.

For Research Use Only. Not for use in diagnostic and therapeutic procedures. Not for resale without express authorization.